

## Celebrating 50 Years of Conservation

**The vision, generosity, and dedication of our community preserves and protects the rustic beauty and healthy ecosystem of the Chocorua Lake Basin across generations.**

For as long as anyone can remember, the view from Route 16 of Chocorua Lake and the Little Lake, the rustic Narrows Bridge, and Mount Chocorua has been one of the most photographed scenes in the Northeastern United States. It has graced calendars all over the world and is recognized on New Hampshire's "America the Beautiful" state quarter. The 6,000-acre Chocorua Lake Basin was designated by the National Park Service in 2005 a National Historic District, the largest such district in New England.

For 50 years, the Chocorua Lake Conservancy (CLC) has preserved the scenic and natural resources of the Chocorua Lake Basin.

Thanks to the vision of its founders, the generosity of its donors, and the dedication of its volunteers, the CLC now protects or owns all properties bordering on and visible from Chocorua Lake.

The result? A stunning and iconic view from the highway, pristine water quality, a scenic landscape, and public access to 40 percent of Chocorua Lake's shoreline and nearby conservation lands.

The founders' vision to protect and preserve Chocorua Lake and the surrounding land was prescient. They were on the early wave of a national

*50 Years, continued on page 3.*



A contemporary photograph merges seamlessly with a vintage 1918 postcard, thanks to generations of CLC members. / Postcard from the collection of Pete Wagner; Photo by Alex Moot

# Timeless Chocorua Protects the Future

The legacy of the Chocorua Lake community was shaped by its founders who in the late 19th century were at the forefront of the conservation movement. The will of Charles P. Bowditch, who owned 80% of the land around Chocorua Lake in the 1890s, expressed his intent “To insure in the future, as I have attempted to insure in the past, the keeping of the shores of the Chocorua ponds in as natural and wild a state as possible.”

Almost 100 years after his death, we would like to think that C.P. Bowditch would be proud of what has become of his beloved Chocorua. The lake, the basin, and the surrounding area remains almost as pristine today as it was a hundred years ago. While it may seem effortless, an immeasurable amount of work has gone into keeping the Chocorua Lake Basin essentially unchanged.

For the past 50 years, the CLC and its predecessors have quietly but effectively helped preserve and protect the basin. Thanks to the vision of its founders, the generosity of its donors, and the dedication of its board members and volunteers, the CLC protects or owns almost all properties bordering on and visible from Chocorua Lake.

But ensuring that Chocorua Lake and surrounding land are protected and conserved forever is a constant effort. That is why as we head into our 50th year we have developed a plan to protect this area now and forever. Funds for this plan will be raised through the *Timeless Chocorua* campaign, comprised of three elements:

## The Basin View Lot

Since the 19th century, this property on Route 16 on the top of the hill south of Chocorua Lake has been owned and thoughtfully maintained by the Bowditch family, who have carefully preserved the vista, the barn, and the stone walls. They have also kindly let passersby park and walk on the land to take photographs. The CLC has reached an agreement with the Bowditch family to purchase a more comprehensive easement that continues the practices the family has always followed, and in addition will:

- Forever prevent a house or other structures from being built on the Basin View Lot.
- Ensure visitors have convenient access to a defined public access area in perpetuity.
- Provide a safer, off-highway parking area for visitors.
- Ensure continued maintenance of the exterior of the historic barn.
- Restore the historic view of the Narrows Bridge and Chocorua Lake from the publicly accessible viewing area.

***“There are very few lakes that exemplify both private ownership and stewardship and permanent protection. What CLC and its donors have done for Chocorua Lake and Basin is truly extraordinary. Now the task is to make certain this works by ensuring resources are available to guarantee good stewardship into perpetuity.”***

— Paul A. Doscher, former Vice President for Land Conservation (retired) at the Society for the Protection of NH Forests

## Stewardship Fund

Land stewardship is how the Chocorua Lake Conservancy keeps its promises. It is how we truly protect the land—long after the excitement of a new property or easement has faded.

A Stewardship Fund will provide annual income for a full-time Stewardship Director (currently Lynne Flaccus) to manage a professional stewardship program to effectively protect the almost 4,000 acres under its care. Maintaining and protecting this land on almost 140 properties in perpetuity is impossible for an all-volunteer organization. To perform this task consistently and efficiently, we need the help of an experienced staff member who can help recruit, train and manage volunteers.

## Chocorua Lake and Land Access Fund

The awe-inspiring view of Mount Chocorua from the Grove on the southern end of Chocorua Lake attracts thousands of visitors annually. Since the 1870s this three-acre spot, the 17-acre area known as The Island, and the 5800 feet of publicly accessible lakefront, have attracted locals and tourists alike.

Since 1968, the CLC has funded the maintenance and cleanliness of these areas for use and enjoyment by all. The CLC receives no federal, state, or town funds for this purpose, which makes up about 30% of its annual operating budget. This fund will support:

- A Lake Patrol Officer (currently Troy Emerson) who visits all CLC-maintained public access areas at Chocorua Lake twice a day, seven days a week, from May through October.
- Erosion control, landscaping, and shoreline maintenance.
- Parking area maintenance.
- Portable toilet rentals.
- Trail maintenance in the Bolles Reserve and other CLC-maintained conservation lands.
- Repairs and periodic replacement of the historic wooden railings on the Narrows Bridge.
- Maintenance of the dam at the outlet from the Little Lake to the Chocorua River.

As of May 1st, the CLC has raised \$1,405,545 in campaign gifts and pledges from 76 generous families and \$136,050 in approved grant funding. We hope to wrap up the *Timeless Chocorua* campaign by the end of the summer or early fall.

To make a donation to the *Timeless Chocorua* campaign, or for more information, please visit [www.timelesschocorua.org](http://www.timelesschocorua.org).



50 Years, continued

movement to use ownership and easements to conserve and protect land.

By the mid-20th century, it was becoming clear to all who loved the basin and its beauty that the pressures of development were converging on one of the last unspoiled stretches of Route 16, a major corridor to the White Mountains for thousands of visitors newly freed from wartime gas rationing. It was also clear that the uncoordinated actions of individual landowners could not be relied upon to protect this treasure for the public in perpetuity.

In 1968, landowners in the Chocorua Lake Basin joined with other members of the community to form the Chocorua Lake Conservation Foundation (CLCF) and the Chocorua Lake Association (CLA), sister organizations with a joint mission of preserving forever the beauty and natural resources of the basin for public benefit. The CLCF and CLA were publicly supported nonprofits, relying entirely on financial contributions and other support from basin landowners and the general public, and representing the commitment of a “village” which extended far beyond the basin. In 2014, the CLCF and CLA merged to form today’s Chocorua Lake Conservancy, which carries on their mission and commitment.

Over 125 individuals have generously donated their time as board members of the CLFC, CLA and CLC over the past 50 years, and over 725 different households have made financial donations.

## Today’s “Village”

In an effort of remarkable creativity, foresight, and consensus-building, the founders of the CLCF and CLA united virtually all of the landowners of the basin in a community preservation effort, utilizing tools which had not yet been invented under state or federal law. Conservation Easements, as we know them today, did not yet exist, and landowners

## TAX BREAK ALERT

Did you know that if you are at least 70 ½ and taking a Required Minimum Distribution (RMD) from an IRA you can direct some (or all) of that RMD directly to the Chocorua Lake Conservancy as a Qualified Charitable Donation (QCD)? This makes giving easy and can help to lessen your tax liability, especially important given that the new tax plan has eliminated some tax advantages to charitable giving. *To learn more about QCDs, consult your financial adviser or IRA custodian.*

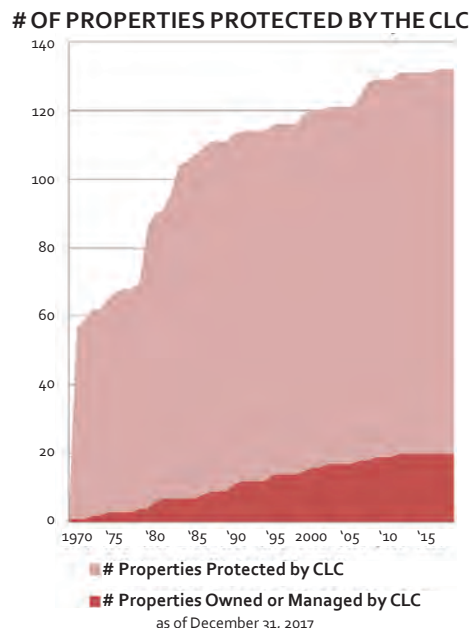
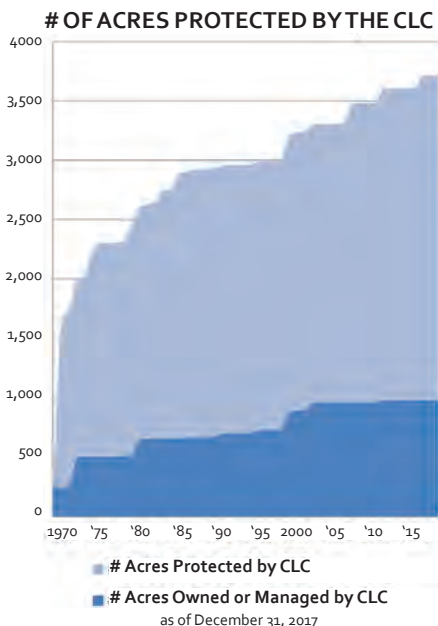
who agreed to restrict the future development of their property with perpetual conservation covenants received no income tax benefit from their generosity. New Hampshire did not recognize modern Conservation Easements until 1979, and the IRS did not allow charitable donations for gifts of easements until 1980.

Today the basin and its thousands of annual visitors enjoy the results of a nearly complete network of conservation agreements by and among basin landowners. This network of protection of an entire watershed is highly unusual, if not unique. Just as the creation of this network of protection required the coordinated efforts of an entire community, or “village,” the maintenance and stewardship of this network requires the participation and support of the community as we move into the future.

## Summer of Celebration

The CLC plans to mark the 50th anniversary with a series of events to celebrate and engage with our community. We encourage everyone to check out the list of events on page 4.

The Chocorua Lake Basin belongs to this community, and its future depends on all of us. We invite the entire community to join us this summer as we celebrate and plan for the continued preservation of this special corner of the world.



## A SUMMER OF CELEBRATION: UPCOMING EVENTS

### Fri. June 8, 9-11AM

*Stewardship Day with Lynne Flaccus.* Invasive plant patrol. Bring your kids for a fun family day. Meet at the Grove parking area on Chocorua Lake Road.

### Sat. June 16, 10AM-12PM

*Stream Exploration with Lynne Flaccus.* Meet where the Chocorua River goes under Scott Road—the first bridge. All ages welcome!

### Sat. June 30, 5:30PM to dark

*50th Anniversary Kickoff Party,* The Island, Chocorua Lake. Come celebrate the work of the CLC to keep Chocorua Lake pristine and accessible to everyone. *Registration required.*

### Sun. July 1, 8:45-10:30AM

*CLC Highway Trash Pickup.* Meet in the Grove at 8:45. Enjoy time outside with friends and neighbors helping to care for a place we love. Bags and safety vests will be provided.

### Sat. July 7, 9AM-1PM

*CLC at the Farmers' Market.* Come visit with the CLC at the Tamworth Farmers' Market.

### Fri. July 13, 8-11AM

*Lake Paddle with naturalist Lynne Flaccus.* BYO canoes and kayaks, lifejackets. Meet at the Island for put in. All ages welcome; kids must be accompanied by an adult.

### Sat. July 14, 12-2PM

*Members Cookout,* Cannon field, Philbrick Neighborhood Rd.

### Thurs. July 18, 9-11AM

*Stewardship Day.* Invasive plant patrol! Charlotte C. Browne Memorial Woods. All ages welcome.

### Sat. July 28, 10AM-2PM

*Chocorua Day.* Come visit with the CLC at this celebration hosted by the Chocorua Community Association.

### Sat. Aug. 4, 9AM-2PM

*Tamworth Street Fair.* Join in the fun in Tamworth Village, and stop the CLC table.

### Sat. Aug 4, 5-8PM

*Opening Reception for "Impressions of the White Mountains"* art exhibit at the Tamworth History Center. Exhibit runs through Columbus Day. (See description on facing page.)

### Wed. Aug. 8, 7:30-9:30AM

*Lake Paddle with naturalist Lynne Flaccus.* BYO canoes and kayaks, lifejackets. Meet at the Island for put in. All ages welcome—kids must be accompanied by an adult.

### Sat. Aug. 11, 12-2PM

*Members Cookout,* Wheelers' field, Chocorua Lake Road

### Sat. Aug. 11, 7:30-10PM

*Tamworth Contra Dance,* co-sponsored by the Tamworth Outing Club and the CLC. Traditional New England contra dancing is fun, easy, and family-friendly. Tamworth Town Hall.

### Mon. Aug. 13-Fri. Aug. 17

*Magic of Woods & Water* with Lynne Flaccus, Ed Parsons & others, in collaboration with The Yeoman's Fund for the Arts. A week of daily opportunities to slow down, observe, and celebrate the magic that happens when we spend time in nature noticing what's around us and within us. Nature journals, sketching, walking meditation, conversation & more. Kid track and adult track. Visit the CLC website for schedule and registration.

### Sat. Aug. 18, 3-6PM

*Annual Meeting & Cocktails,* Runnels Hall.

### Aug. TBA

- *Woods Wander with Lynne Flaccus.* Wander through the Bolles Preserve and around Heron Pond with naturalist Lynne Flaccus.

- *Stewardship Day.* Chip spreading!

- *Stewardship Day.* Shrub planting!

### Sat. Sept. 1

*Timeless Chocorua Donor Celebration.* An event to celebrate the generosity of donors to the *Timeless Chocorua* capital campaign. This is an invitation-only event for campaign donors.

### Sun. Sept. 2, 6PM to dark

*Annual Potluck & Parade of Lights* at the Grove on Chocorua Lake Road.

### Sept. TBA

- *Stewardship Day.* Shrub planting!

- *Woods Wander with Lynne Flaccus.* Explore some of the Preserves managed by the CLC with naturalist Lynne Flaccus.

### Sat. Oct. 6, 8:45-10:30AM

*CLC Highway Trash Pickup.* Meet in the Grove at 8:45. Bags and safety vests will be provided.

For latest details and schedule updates visit:  
[www.chocorualakeconservancy.org/news/2018-events/](http://www.chocorualakeconservancy.org/news/2018-events/)  
and follow us on Facebook:  
[www.facebook.com/chocorua.lake.conservancy](https://www.facebook.com/chocorua.lake.conservancy)



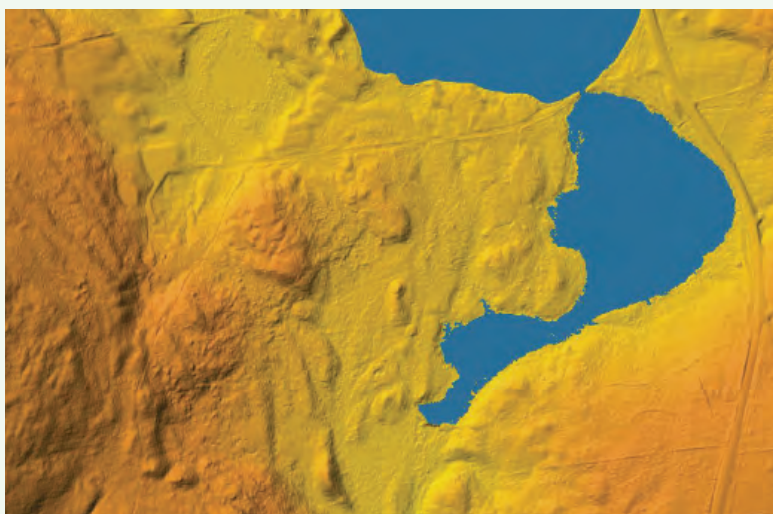
## "IMPRESSIONS OF THE WHITE MOUNTAINS" ART EXHIBIT AND SALE

The Chocorua Lake Conservancy is excited to announce "Impressions of the White Mountains" in collaboration with the Tamworth History Center. This exhibit and sale of White Mountain paintings featuring Mount Chocorua, the lake basin, and other area vistas, will run from August 5 through Columbus Day and benefits the Chocorua Lake Conservancy and the Tamworth History Center. Works by artists including Champney, Casilear, Colman, Gerry, a'Becket and others will be presented by Doug & Karin Nelson of Ledges Gallery. The exhibit will also include a series of talks & events—details to follow.

"Carter Notch" / Marion P. Howard (1883-1953)

## CLC 50TH ANNIVERSARY BOOK

In 1983 and 1993, Alan and Lydia Smith and other contributors put together 15th and 25th anniversary booklets for the CLA/CLCF/CMC about the history of conservation in the Chocorua Lake Basin. To celebrate the CLC's 50 years of stewardship, Ruth Weld and Bonnie Hurd Smith have volunteered to lead an effort to create an updated 50th anniversary book about the history of the Chocorua Lake Basin. The chapters are all written by CLC members and friends, and the finished book will include chapters about the basin's unique artistic, literary, cultural, social, and natural history. The aim is to showcase the timeless qualities of the basin as well as the immense effort that goes into keeping it that way.



Chapter excerpt: A new, highly detailed topographic data set reveals the basin's geographical history. / LiDAR image courtesy of Rick Allmendinger



## COMMEMORATIVE COIN PACK

All donors to the *Timeless Chocorua* campaign will receive a commemorative coin pack containing the U.S. quarter released by the U.S. Treasury in 2013 which features the Chocorua Lake Basin. This coin pack will be provided to donors in September. Campaign donors will also be invited to attend a campaign celebration party in Chocorua over Labor Day weekend.



## PRESIDENT'S LETTER

Dear Members and Friends,

As we celebrate the 50th anniversary of the Chocorua Lake Conservancy, it's important to remember that the CLC is in the "forever business."

Often people who aren't familiar with land trusts are a bit skeptical when we mention that our conservation agreements last forever.

When confronted by this fact at the time of signing a CLC conservation covenant in the late 1960s, one landowner said, "Perpetuity is a hell of a long time, isn't it?"

But that's exactly the point: the CLC's conservation agreements last forever.

That's a big responsibility for the Chocorua Lake Conservancy—one that we take seriously. To ensure that the CLC is healthy enough to carry the weight of this responsibility long into the future, we need:

- The financial resources to professionally manage and uphold over 130 conservation agreements into perpetuity and to forever provide convenient, attractive public access to Chocorua Lake and nearby conservation lands to visitors and residents.
- The people—staff, board members, committee members, volunteers, landowners, community members and partners—who are all committed to forever protecting and preserving the Chocorua Lake Basin.

What the CLC founders achieved in the 1960s is truly amazing. They convinced 50 landowners in the basin to voluntarily sign agreements restricting their property rights for the benefit of fellow landowners, local residents, and tourists. By 1970, they had protected over 1,400 acres from development. By 1985, over 2,200 acres had been successfully protected. Today, almost 4,000 acres are protected.

While all of these properties remain protected 50 years later, only four of the original 50 signers of conservation agreements are still with us, and fewer than half of protected properties are still owned by family members of the original signers. Each time a property is sold to a new owner, or passes to the next generation of family members, part of our stewardship role is to help the new owners understand what they are permitted to do with the property under the terms of the agreements.

In 2014, we successfully merged our two predecessor organizations to form the Chocorua Lake Conservancy. Over the past four years, the Board of Directors and our many dedicated volunteers have worked hard to transform the CLC into a modern land trust capable of managing and protecting almost 4,000 acres across 132 properties.

In August 2016, we launched the *Timeless Chocorua* campaign to provide the CLC the necessary financial resources to protect the basin and to provide attractive public access to visitors for another 50 years and beyond. We hope you will join us at one or more of the 50th anniversary events we have planned for this summer, and that you will support the *Timeless Chocorua* campaign as generously as you are able. You can take satisfaction in knowing that you are contributing to something that will last forever.

### ALEX MOOT

President (2017-18)

## BOARD OF DIRECTORS

**Alex Moot**  
President

**Margaret Wheeler**  
Vice President

**Robert Seston**  
Treasurer

**Penny Wheeler-Abbott**  
Secretary

**Melissa Baldwin**

**David Farley**

**Andrew Fisher**

**Geoffrey Gill**

**Steven Lanou**

**William Mayer**

**Jean McKinney**

**Neely Lanou**  
President Emerita

## STAFF

**Lynne Flaccus**  
Stewardship Director

**Troy Emerson**  
Lake Patrol  
(May to October)

## INCOME STATEMENT FY2017

For the period from January 1 to December 31

INCOME	2017	2016
Household Memberships & Cash Donations	\$74,999	\$74,692
Business Partner Donations	2,500	0
Events & Merchandise Sales	3,418	1,495
Forestry Revenue	23,065	10,728
Grants Received	3,038	4,500
Donated Services	1,854	151
<b>TOTAL INCOME</b>	<b>\$108,874</b>	<b>\$91,566</b>

## EXPENSES

<b>Land Conservation</b>	<b>\$66,520</b>	<b>\$43,100</b>
Staff Compensation & Benefits	52,104	29,507
Legal & Consulting Services	7,870	9,487
Rent & Office Expenses	6,546	4,106
<b>Property Management</b>	<b>\$28,698</b>	<b>\$15,909</b>
Staff Compensation & Benefits	12,994	2,673
Grove, Bridge & Dam Maintenance	8,238	8,647
Insurance & Payments in Lieu of Taxes	3,465	20
Public Convenience & Other Expenses	2,851	2,974
	1,150	1,595
<b>Lake Protection</b>	<b>\$384</b>	<b>\$0</b>
Water Tests	\$384	\$0
<b>Education &amp; Outreach</b>	<b>\$16,745</b>	<b>\$13,536</b>
Newsletters (Spring & Fall)	8,809	7,860
Member Events & Conferences	3,447	3,283
Merchandise Costs	2,990	1,443
Dues & Contributions to Other Organizations	1,500	950
<b>Administration (Governance &amp; Finance)</b>	<b>\$2,453</b>	<b>\$2,656</b>
Liability Insurance	1,629	1,338
Annual Meeting & Board Meetings	559	459
Accounting, Tax Prep & Business Fees	265	859
<b>Development &amp; Membership</b>	<b>\$7,382</b>	<b>\$9,649</b>
Membership Appeals	5,596	8,354
Donation Processing Fees	1,786	1,295
<b>Donated Services</b>	<b>\$170</b>	<b>\$117</b>
<b>TOTAL EXPENSES</b>	<b>\$122,351</b>	<b>\$84,967</b>
<b>OPERATING SURPLUS (DEFICIT)</b>	<b>(\$13,478)</b>	<b>\$6,599</b>

## NON-OPERATING ACTIVITY

<b>Interest, Dividends &amp; Gains</b>	<b>\$114,052</b>	<b>\$25,912</b>
<b>Timeless Chocorua Campaign</b>	<b>\$288,917</b>	<b>\$491,463</b>
Donations & Pledge Receipts	\$292,907	\$514,573
Grants Received	\$28,000	\$0
less: Campaign Expenses	(\$31,990)	(\$23,110)
<b>Land Interests Acquired</b>	<b>(\$30,609)</b>	<b>(\$17,026)</b>

## ASSETS (as of Dec 31)

<b>Bank Balances</b>	<b>\$150,709</b>	<b>\$126,279</b>
<b>Investments (operating &amp; project funds)</b>	<b>278,243</b>	<b>221,892</b>
<b>Investments (capital campaigns)</b>	<b>736,771</b>	<b>458,670</b>
including Unrealized Gains	95,223	2,126
<b>Total Current Assets:</b>	<b>\$1,165,723</b>	<b>\$806,841</b>
<b>Conservation Covenants &amp; Easements</b>	<b>\$185,114</b>	<b>\$154,505</b>
<b>Fee-Owned Properties</b>	<b>\$510,461</b>	<b>\$510,461</b>
<b>Total Fixed Assets:</b>	<b>\$695,575</b>	<b>\$664,966</b>
<b>TOTAL ASSETS</b>	<b>\$1,861,298</b>	<b>\$1,471,806</b>

## MEMBERS &amp; DONORS

Family Memberships (\$100 and up)	244	228
Individual Memberships (\$50 to \$99)	86	88
Friends & Student (\$1 to \$49)	56	44
Business Partners (\$100 to \$1,000)	14	0
	<b>400</b>	<b>360</b>

<b>First-Time Donors</b>	<b>85</b>	<b>66</b>
--------------------------	-----------	-----------

## Donors by State

New Hampshire	142	130
Massachusetts	93	86
Pennsylvania	16	13
California	15	10
New York	14	17
Maine	12	10
Connecticut	9	10
Florida	8	5
Virginia	8	5
Vermont	7	6
Maryland	7	9
Colorado	6	6
Other States	49	53

2017 Annual Report

## HONORING OUR VOLUNTEERS

We are enormously grateful for the more than 70 volunteers, committee, and board members who supported the Chocorua Lake Conservancy with their time and talents during 2017!

### Newsletter

#### Editor & Publisher:

Laura Cannon

#### Assistant Editors:

Theo Page

Ruth Weld

#### Contributors:

Rick Allmendinger

Dwight Baldwin

David Farley

Harriet Hofheinz

Steve Lanou

Kristy Mathews

Bill Mayer

Jean McKinney

Jim Moir

Alex Moot

Larry Nickerson

Peg Wheeler

### Membership Renewal Mailing (April 30th)

Geoffrey Gill

Harriet Hofheinz

Steve Lanou & Mieke vander Wamsen

Alex Moot

Jean McKinney

Ruth Weld

Peg Wheeler

### Highway Trash Pickup (Oct 7th)

Melissa Emerson (organizer)

Anne, Bill and David Foley

Pam Helm

Harriet Hofheinz

Neely Lanou

Tisha McIlwraith

Jean McKinney

Michael Robbins

Bob Seston

Steve Weld

John Wheeler

Anne Zwart

### Members Cookout (July 2nd)

Jim, Kim and John Moir (hosts)

Ken Smith & Anne Marie Biernacki

Andrew and Tisha McIlwraith

Nancy Roosa

Ruth Weld

### "Save a Loon" Fishing Derby (July 8th)

Ryan Buchanan, Chair

David Buchanan

Jen Buchanan

### Chocorua Day (July 29th)

Sarah Lloyd Hall

Tisha McIlwraith

Amey Moot

Theo Page

### Invasive Species Pull (Aug 4th)

Susan Lee

Kit Morgan

Bob Seston

John Watkins

### Tamworth Street Fair (Aug 5th)

David Farley

Jean McKinney

Peg Wheeler

Penny Wheeler-Abbott

### Members Cookout (Aug 12th)

Wheeler and Lanou families (hosts)

Harriet Hofheinz

Steve Lanou & Mieke vander Wamsen

Tisha McIlwraith

Penny Wheeler-Abbott

Nancy Roosa

### Annual Meeting (Aug 26th)

Laura Cannon

Nancy Fryberger

Jean McKinney

Alex Moot

Ruth Weld

Penny Wheeler-Abbott

### Island Woodchips (Sept 2nd)

Neely Lanou

Margo Lewis & John Hochschwender

Kent and Kay Miller

Alex Moot

Carl, Elena and Sophia Procario-Foley

Michael Robbins

Kem Stewart

Anne Twitchell

John Wheeler

Anne T Zwart

### Members Porch Party (Sept 2nd)

Wheeler & Lanou families (hosts)

Lydia Abbott

Victoria Abbott

Laura Cannon

Ellen Keith

Anneke Lanou

Steve Lanou & Mieke van der Wamsen

Jean McKinney

Tisha McIlwraith

Betsy Memishian

Kaly Moot & Dmytro Hryckowian

Alex Moot & Nancy Roosa

Amey Moot & Kem Stewart

Tracy Skillin-Lanou

Ruth Weld & Mike Borys

Peg Wheeler

Penny Wheeler-Abbott

### John Kaag Presentation (Sept 16th)

Wonalancet Out Door Club (WODC)

Chele Miller, WODC

Theo Page

### Grove BYOB Party (Oct 8th)

Alex Moot

Geoffrey Gill



## VOLUNTEER RECOGNITION

### Year-End Appeal Mailing (Nov 19th)

Steve Lanou  
Betsy and Barry Memishian  
Alex Moot & Nancy Roosa  
Jean McKinney  
Michael Rich  
Peg Wheeler

### Summer Volunteer

Renee Baldwin

### Property Stewards

Dwight Baldwin (Burt Lot)  
Thad Berrier (Moose Meadows)  
Mark Dube (Browne Memorial Woods)  
David Farley & Bob Seston (Woodhouse Reserve, Bowditch Reserve)  
Andy Fisher (Adams Lot, Winslow's Rest, Snow Reserve)  
Gerri Lane (Brown Lot)  
Kit Morgan (Scott Preserve)  
John Watkins (Burt Lot & Clark Reserve)

### Narrows Bridge repairs & maintenance

Larry Nickerson  
John Watkins

### CLC Apparel

Sarah Lloyd Hall

### Cash Drop Box Collections

John Wheeler

### Communications

Ruth Weld

### Website

Alex Moot  
Ruth Weld

### Land Conservation Committee

Peg Wheeler, Chair  
Tim Baldwin  
Mason Browne  
Harriet Hofheinz  
Neely Lanou  
Amey Moot  
John Watkins

### Property Management Committee

David Farley, Co-Chair  
John Watkins, Co-Chair  
Dwight Baldwin  
Andy Fisher  
Bob Seston

### Lake Protection Committee

Dwight Baldwin, Chair  
Melissa Baldwin  
Tim Baldwin  
Lindsay Cannon  
Tara Schroeder  
Steve Weld  
Townsend Zwart

### Education & Outreach Committee

Ruth Weld, Chair  
Laura Cannon  
Pam Helm  
Harriet Hofheinz  
Sarah Lloyd Hall  
Tisha McIlwraith  
Jean McKinney  
Theo Page

### Finance Committee

Bob Seston, Chair  
Geoffrey Gill  
Alex Moot

### Audit Committee

Geoffrey Gill, Chair  
Bill Mayer

### Development & Membership Committee

Steve Lanou, Co-Chair  
Alex Moot, Co-Chair  
Jean McKinney

### Governance Committee

Melissa Baldwin, Chair  
Peg Wheeler  
Penny Wheeler-Abbott

### Nominating Committee (2017-18)

Melissa Baldwin  
Alex Moot  
Peg Wheeler

### Timeless Chocorua Steering Committee

Alex Moot, Chair  
Steve Lanou  
Theo Page  
Peg Wheeler  
Penny Wheeler-Abbott

### Timeless Chocorua Campaign Videos

Bill Gast  
Alex Moot  
Michael Rich  
Phil Wagner

### Trail Maintenance

Chocorua Mountain Club

### Board Meeting Space

Mari's Treasurers (Chocorua)  
Drummond Woodsum (Portsmouth)



## WANT TO HELP?

Looking for a way to give back to the Chocorua Lake Basin? It's likely the CLC has a volunteer opportunity to match your time, talents, and interests.

Volunteers are the heart of the CLC, and power our ability to manage and protect 4,000 acres and provide convenient, attractive access to Chocorua Lake and conservation land trails to thousands of annual visitors.

Learn more or volunteer today >>

<https://bit.ly/2EAy5Pj>

## HONORING & THANKING OUR DONORS

This recognition list is more than a list of names – it's a celebration of donors who gave this past fiscal year (January 1 to December 31, 2017). As the CLC enters its 50th year, we are recognizing your giving because you – our members and donors – are amazing!

During 2017, we received generous financial support from 386 households, including an impressive 85 first-time donors.

Those who invest in the CLC realize that protecting the scenic and natural resources of the Chocorua Lake watershed and providing access to visitors takes time, dedication, perseverance, and it takes resources. Our donors take a long view and stay committed for the long haul.

Thank you! Our growing community of supporters makes possible the impact and results achieved every year. Your dedication and commitment inspire confidence in people who choose to become new members. Donations of all sizes are greatly appreciated and further our mission.

Please take pride and celebrate with us! Your philanthropic investment has made enormous strides towards helping the CLC transform into a modern land trust with the resources necessary to protect the Chocorua Lake Basin in perpetuity. Thank you – we appreciate every contribution along the way.

We wish to recognize all of our generous supporters. We strive to spell correctly all donors' names and recognize all who contributed. Should you identify an error, please accept our apologies and contact Alex Moot at [amoot@chocorualakeconservancy.org](mailto:amoot@chocorualakeconservancy.org) so we may correct our records.

*Note: This list reflects gifts to the CLC's annual operating fund, including membership donations and year-end appeal donations. Giving levels do not include the many generous gifts to the Timeless Chocorua campaign the CLC has received to date.*

### Mt. Chocorua Society (\$2,500+)

**Anonymous** ‡

**Anonymous** ‡

### Lake Chocorua Society (\$1,000-\$2,499)

**Richard and Nancy Fryberger** ‡

Roger and Benedicte Hallowell ‡

Jocelyn W Hubbell

**Cornelia and Robert Lanou** ‡

Peter Lewis & Joanne Kelley ‡

William P Mayer & Diane L Currier ‡

Kent and Kay Miller ‡

**Alex Moot & Nancy Roosa** ‡

Amey Moot & Kem Stewart ‡

Samuel and Damon Newsom

Andrea M Pi-Sunyer & Derek Trelstad

Penelope and Xavier Pi-Sunyer

Michael Robbins ‡

Sarah B Tipton ‡

Robert and Sandra Watkins

### Little Lake Society (\$500-\$999)

Richard Allmendinger & Teresa Jordan ‡

Peter Colpitts

Janet Cooke ‡

Leda Dunmire ‡

CJ and Cynthia Herman ‡

David G Kanter

**Andrew and Letitia McIlwraith** ‡

Robert Sedgwick ‡

Pam and Rick Sedler

Robert and Carolyn Seston ‡

*Turkomer Family*

Anne D Twitchell ‡

Katrina Wagner

Deborah and John Woodhouse II

Marilyn M Woodhouse ‡

### Narrows Bridge Society (\$250-\$499)

**Barbara and Dwight Baldwin Jr** ‡

Jennifer and David Buchanan

*Paul and Anne Chant*

**David and Patricia Farley** ‡

Andrew and Beth Fisher ‡

William and Vivian Gast ‡

Michael and Sarah Harlan

Fritz Hofheinz & Lisa Evangelista

*Peter Hruddy & Nicole Pitre*

Derek Katz

**Stanley and Adria Katz**

David and Susan Kunhardt

Gregory Lanou & Tracy Skillin-Lanou ‡

Margo Lewis & John Hochschwender ‡

Sarah Lloyd Hall & Rick Hall

Priscilla Loring

George Mathews IV & Niki Danou

Patrick Miller & Pamela

Andruszkiewicz ‡

Tim Naimi & Chetna Mehrotra

Donal and Gillian O'Callaghan

*Keith Ohmart & Helen Chen*

Samuel Page & Jessica Kender ‡

**Thomas and Joan Peters**

Julie and Beatrice Porter

Michael Rich & Lydia A Shrier ‡

David and Julie Sternberg

*Patricia Travis*

Andy and Mattie Wheeler ‡

**Kathryn and Leonard Wheeler Jr** ‡

Melinda Wheeler & Greg Libecchi

Claude and Martha Wintner ‡

Barbara P Worcester ‡

G Townsend Zwart & Anne Twitchell

Zwart ‡

Gretchen Zwart & Pamela Owen

Anonymous

Anonymous

### Family Members (\$100-\$249)

*Dylan and Mitch Alden*

David Alexander & Christina Taraszuk

Ann E Allmendinger

George and Victoria Arponen

*C Scott Aspinall*

*Dalton and Noreen Avery*

Eliza Cannon Baldrige & Bert Baldrige

Melissa and Arthur D Baldwin III ‡

Red and Diana Barrett

James and Catherine Baybutt

Ned Beecher & Chris Clyne

**Bold:** Member 10 or More Years in a Row // *Italics:* First-Time Member // ‡ Donated or pledged to CLC's Timeless Chocorua campaign as of April 28, 2018

## 2017 MEMBERS AND DONORS

Edgar Bisson  
*Priscilla J Bloomfield & Ryan Smith*  
 Amy Bono  
 Nola Boomer ‡  
 Bruce Bowditch  
 Mark I Bowditch  
 Rachel Bowditch  
 Dennis and Jan Brown  
 Margarita and William Brown Jr  
 Mason and Joan Browne  
 Laura Cannon & Sean Kerwin  
 LeGrand Cannon IV & Jennifer Cobo Cannon  
 Elizabeth and Herbee Chadwick  
**Sarah E Chamberlin**  
 Jean Chester  
 Forrester Clark Jr  
 John and Michelle Cleveland  
*Norman Cloutier & Wendy Ketchum*  
 Susan Colten  
 Douglas and Elena Coulter  
 Nancy Coville  
 Keith and Patricia Cunningham ‡  
 Hugh and Rosemarie Deane  
 David and Noreen Downs  
 Bethany Dunbar & Jim Bowes  
 Ned Eldredge  
 Earl and Sue Engelmann ‡  
 Richard Ewell  
 Jeff Farley  
*Lynne Flaccus & Greg Shute*  
 Anne Foley  
 Rev. Fr. William E Foley  
*Mary E Fowler*  
 Christine Cannon Fredericks & Andrew Fredericks  
 Geoffrey and Karen Gill ‡  
 Peter and Susan Gill  
*John Gotjen & Barbara Drake*  
 Peggy Greenough & Joel Johnson  
 Katharine and Robert Griffin Jr  
 Richard Griffin ‡  
*Miriam Habert & Nicholas Jaques*  
 Sherry and Nick Hadden  
*Claire Hailson*  
 Ross and Bonnie Hall ‡  
 Jeffrey and Miriam Harlan ‡  
 Peter Harlan & Lynn Levin  
 Barbara Hebert  
*Marianne Mayer Heilferty*  
 Pamela Helm

Eleanor and William Helm Jr  
 Alfred and Frances Hoadley  
 Lawson Hockman & Jacqueline Wolfe ‡  
 John and Patricia Hoffman  
 Harriet Hofheinz ‡  
 Michael and Hannah Hornsby  
*Jean L Huntoon*  
 Steven and Kathleen Jacobsen  
 Don and Lisa Johnson ‡  
*Stephen Thor Johnson*  
*Albert C Jones*  
 Patricia Jones & Scott Kennedy  
*Marion Katz & Bradley McCormick*  
 Thomas and Megan Kavanaugh  
*Peter and Elaine Klose*  
*Samuel and Ruth Knowles*  
*Glen J Konstantin*  
 John Koob  
**Tom Korson & Mary Mullarkey ‡**  
 Andrew and Emily Korson  
 Elizabeth Kumm  
 Anita Kunhardt & Diana Bailey ‡  
 Thomas Kunhardt & Helen Lindberg ‡  
 Kate Lanou ‡  
 Steven Lanou & Mieke van der Wansem ‡  
*Bruce Larson & Kathleen Bird*  
 Richard and Eileen Lennon  
 William Lincoln Jr & Victoria Mateo ‡  
 David M Little III & Tracey Collins  
 Marion Lloyd Salois & Dean Salois  
*Chester and Lydia Lucy*  
 Douglas MacLean & Susan R Wolf  
 Michael Magruder  
 Stanley and Nancy Marsden  
 Howard and Nancy Mathews ‡  
 Sheryl and George Mathews III  
 Virginia M Mayer  
 Jean and John McKinney ‡  
 Laurence McKinney & Rekha Nigam  
 Elizabeth and Barry Memishian ‡  
 Margaret Merritt  
 John and Catherine Mersfelder  
 Helen and Stephen Mesick  
*Chele Miller*  
 Dana and Ariane Miller  
 Mary B Miller  
 Capt William BB Moody  
 Sarah B Moody & Alberto Cavallero  
*Gordon Moore*  
 Jonathan D Moore

Patricia and George Moriarty Jr  
 Lee and Charles Narwicz  
 Linda B Nighswander ‡  
 Margaret O Nighswander  
 Carl and Karen Nydegger  
 June Aprille & Nelson O'Bryan  
 Deborah and David Osborn  
 Rachel Page & David Bethel ‡  
 Toby and Theo Page ‡  
 Lynn Paton  
 Sheldon and Nina Perry  
 Joanna Pi-Sunyer & Michael Ballo ‡  
 Alix and Robert Pratt  
 Linda Price  
 Adam Prince  
 Carl and Elena Procario-Foley  
 Tom and Sarah Reed  
*Frederick Richardson*  
 Helen Robbins  
*Katharine M Roed*  
 Robert Rotberg & Cornelia Johnson ‡  
*Susan Rowley*  
 Sandy and Peg Rubel  
 Dene Ryfun-Turner & Curtis Turner  
*Dennis and Deborah Skillman*  
 Sarah B Smith  
*Colby and Kim Snyder*  
 Joel and Lorraine Streeter  
 Amanda and Michael Swinchoski  
 Tara Taylor & Thomas Currier Jr  
 Katharine T Thompson  
 Deborah Tipton & Shi-Ling Hsu  
 Nat and Liz Tipton  
 Rebecca Tipton & John Hiebert ‡  
 David and Beth Trumper  
 James and Margaret Turk  
 Tim and Libby Twitchell  
 Roger Twitchell III  
 Stella and Yasu Ueda  
 Edward Vander Clute  
 William and Carrie Vander Clute  
 Andrea Marie and Robert Vibbert Jr  
 Philip and Regina Wagner  
 Betsy Watt  
 John Wheeler & Gail Troseth  
 Laura Wheeler & Jeff Landesman ‡  
 Margaret Wheeler ‡  
 Rachel Wheeler  
 Penny Wheeler-Abbott & George Abbott ‡  
 Hugh and Mary Whitman ‡



## 2017 MEMBERS AND DONORS

Randal Whitman & Leanna Lee-Whitman

*Martha Williams*

Joan Miller Willis & Brian C Willis ‡

Jane and Erich Witzel

Edward and Willa Wolcott

Ned Worcester

*Amy J Worrell*

Lisa and Lance Zack

Gerrit Zwart & Cynthia Sunderland

### Individual Members (\$50-\$99)

Candace Abbott

Ingrid and Mark Albee

*Peter Ambler & Lindsay Miller*

Helen C Armstrong

**Timothy Baldwin**

*Roger and Hilda Berlinguette*

Hans-Peter and Karen Biemann

David and Elizabeth Bowles

Margaret P Cannon

Wint Cannon

*Lawrence and Sandra Carr*

*Ann F Chamberlin*

*Dennis Chesley & Mary Beth*

*McAllister*

*Chin Chueh Gung*

*Richard Choate*

Robert Clark

John Colbath

Robert and Pamela Crawbuck

Douglas and Astrid

Chris and Tracy Dolan

Fred and Margaret Doscher

David Eastman

*Wendy and Eric Federer*

Don Gauthier

Nancy and Wayne Ghirardini

Elizabeth R Gillette

*Rachael Glaws & Joshua Pinedo*

Linda Graetz

Laura and Malcolm Greenough III

*Elinor L Hollowell*

Virginia Harlan

Nancy S Hazlett

Sally and Gerald Head

C Barre Hellquist

Kent and Carolyn Hemingway

Hollis and Edith Hunnewell

*Richard and Louise Johnson*

Susannah B Keith

Jane M Kilborn

Christopher Krug

Gerri Lane

Guido and Jeanne Lippo

Lawrence Little

Stephen Loring

Elizabeth L Loughran

Diana Louis

*Peter and Rebecca Mattison*

Douglas McVicar

*Kaly Moot*

*Kit Morgan*

Robert Newton

Peter and Guida Nighswander

Barbara Nordeen

Norma Osborn

*Victor J Petzy Jr*

Katharine Phenix

*Ronald Poloske*

*Lianne Prentice*

*Patricia Provenzano*

Karen and Brett Redd

Thomas Renaud

Susan Rich & John Ames

Becky Ryder Riley

Lauren Salois

John Sedgwick & Rana Foroohar ‡

Daniel C Seely Jr

Aime Sevigny

*Jennifer D Smith & Robert Smith*

Helen R Steele

Jean Tewksbury & Jean Rendall ‡

Mark and Ruth Timchak

Gary and Diane Viera

Bruce and Nancy Walker

*Gabrielle Watson*

*Carolyn Watt Williams & Greg Williams*

Alice R Waylett

Ruth Weld & Michael Borys

Ian Wellinghurst

Anne H Wheeler

Hugh Whitman Jr

*Jennifer Wiley*

Mary Yntema

John Young

*Anonymous*

### Friends & Students (\$1-\$49)

Nancy E Baker

*Sheldon and Marilyn Binder*

*Carol P Brobst*

Jean and David Brown

Edward C Browne Jr

Reid and Dusty Bunker

*Nancy E Burns*

*Joelle Cabot*

Laurel Cameron

Richard and Helen Codling

*Lora Colten*

*Kenneth Cooper*

Susan Day

Christina P Diebold

Paul and Deb Doscher

*Jessie L Dubuque*

John and Katherine Dyrenforth

Richard Foley & Cheryl Peterson

Sandy Freeto Peterson & Mark Smith

James and Linda Hastings

*Don Hayes*

Kathryn and W Lloyd Helm III

Ellen Keith

*Janette M Kohler*

Jeanne and Louis LaPlante

*Philip and Melissa Laroche*

Rebecca Lee

Thomas Lee

Calvert Magruder

*Katya Mayer*

*Ashana Rose Michaels*

Majorie C Mitchell

Elaine Paez

*Susan Parker-Sorlien*

Charles and Christine Penglase

*Donald and Janet Poulin*

Michael Proulx

Barbara A Rockwell

James H Rudolph Jr

Nancy Scannell

George and Shirley Scarlett

*Helene Simon*

*Dale A Stephens*

*Bradley M Stevens*

Susan Stowbridge

Louise Taylor & Nancy Sheridan

*Susan Teper*

Richard Timko

W Michael Todd

Edward VerPlanck

Jack Waldron

Ted and Celine Wheaton

Barbara and George Whitesides

Ann Wilkins

*Anonymous*

**Bold:** Member 10 or More Years in a Row // *Italics:* First-Time Member // ‡ Donated or pledged to CLC's *Timeless Chocorua* campaign as of April 28, 2018

## 2017 MEMBERS AND DONORS

### Gift Membership Received

Katharine Baldwin  
Pamela Colpitts Denko  
Katharine Kunhardt  
Peter Miller  
Penelope Colpitts Warren  
Vinnie Colpitts Vista

### Life Members

In recognition for their many years of dedicated service to the CLC or its predecessor organizations

Jim Bowditch  
Neely Lanou  
Toby Page

### BEQUESTS

William H Kumm

### FOUNDATIONS & GRANTS

In support of the Basin View Lot project  
NH Land and Community Heritage Investment Program (LCHIP)  
Fields Pond Foundation  
Samuel P Hunt Foundation

### MATCHING GIFTS

GE Foundation  
Klarman Family Foundation

### IN HONOR

of Dwight and Barbara Baldwin  
Lawson Hockman & Jacqueline Wolfe

### IN MEMORY

of Faith Bowditch  
Edward Vander Clute  
of Bob Bradford

Dalton and Noreen Avery  
Sheldon and Marilyn Binder  
Carol P Brobst  
Joelle Cabot  
Linda Graetz  
Harriet Hofheinz  
Richard and Louise Johnson  
Calvert Magruder  
Keith Ohmart & Hellen Chen  
Norma Osborn  
Susan Rowley  
Robert Sedgwick  
Turkomer Family

of Charlotte C Browne

Sarah E Chamberlin  
of Harrie and Betsy Chamberlin

Nancy S Hazlett  
of Stan Coville

Nancy Coville  
of Nancy Leighton Darling

Jean L Huntoon  
of Sabrina Galusha

Barbara Carleton  
of Janice Phipps and Kate Hadden

Sherry and Nick Hadden  
of Kay Hubbell

Nancy E Burns  
Jocelyn W Hubbell  
Chester and Lydia Lucy  
of William and Nancy Kumm

Elizabeth Kumm  
John H Kumm

of Barbara Lloyd

Candace Abbott  
Wendy and Eric Federer  
Gregory Lanou & Tracy Skillin-Lanou  
Bruce Larson & Kathleen Bird  
Stanley and Nancy Marsden  
Colby and Kim Snyder  
Anne D Twitchell  
Betsy Watt  
Amy J Worrell

of Helen and Addison Merrick

Bethany Dunbar & Jim Bowes  
of Ruth R Miller

Toby and Theo Page  
of Susan Bowditch Balch Moody

Capt William BB Moody  
of Ellen Guild Moot

Mary E Fowler  
Elinor L Hallowell  
Ellen Keith

Roger and Benedicte Hallowell  
Tim Naimi & Chetna Mehrotra  
of Robert and Barbara Rice

Laurel Cameron  
of Ruth W Rich

Carolyn Watt Williams & Greg Williams

of Charles Tewksbury

Jean Tewksbury  
of Frank Travis

Roger and Hilda Berlinguette  
Victor J Petzy Jr  
Donald and Janet Poulin  
Patricia Provenzano  
Bradley M Stevens  
Dennis and Deborah Skillman  
Patricia Travis  
Martha Williams

of Lewis Travis

Priscilla J Bloomfield & Ryan Smith  
of Sandy Twitchell

Roger Twitchell III  
of John F Woodhouse

Deborah and John Woodhouse II

### BUSINESS PARTNERS

Thank you to all these local businesses who demonstrate support for our mission through donations.

#### Mt Chocorua Level Sponsors (\$1,000 and up)

Jones Brick & Stone (Chocorua)

#### Heron Pond Level Sponsors (\$100 to \$499)

Conway Daily Sun (North Conway)  
Cormack Construction Management (Madison)  
Costantino Real Estate (Ossipee)  
Forest Land Improvement (Chocorua)  
Minuteman Press (North Conway)  
Paul L King Land Surveying (Wonalancet)

Pinetree Power – Tamworth Inc (Tamworth)  
Tamworth Distilling & Mercantile (Tamworth)  
The Farmstand (Chocorua)  
The Preserve at Chocorua (Chocorua)  
Total Concept Property Management (Madison)  
White Mountain Survey Co (Ossipee)

**Bold:** Member 10 or More Years in a Row // *Italics:* First-Time Member // ‡ Donated or pledged to CLC's *Timeless Chocorua* campaign as of April 28, 2018

# The Rewards of Long-Term Stewardship

BY LYNNE FLACCUS

*Stewardship Director*

With spring comes melting snow and ice, warm temperatures and longer days. Changes in the natural world are either sudden explosions or sneak quietly under our radar when we don't notice. As the newsletter writing begins, ice is still on the lake but open water grows every day. I'm looking forward to the warmth and activity of the spring and summer after the quiet of winter.



Lynne Flaccus

We'll be conducting stewardship reviews in a number of different ways this year. As the CLCF has done periodically in the past, we will be contracting with the Society for the Protection of NH Forests to gather aerial imagery of land in the Chocorua Lake Basin. This saves time on boundary walks for some properties and gives us a snapshot of changes to the landscape. Following land trust best practices, we'll use the imagery, in addition to communications with landowners, to document these reviews. Though the imagery will be a useful time saver, the best part about annual stewardship reviews is the opportunity to reconnect with landowners!

Bill Mayer, a longtime property owner in the basin, offered to share some brief comments about his connections to his family's land and his experience with stewardship. I appreciate his thoughtful words and hope you will as well.

Thanks, Bill!

## WILDLIFE NOTES

### Water-Loving Loons

Harry Vogel, Executive Director and senior biologist from the Loon Preservation Committee, shared his knowledge with the local community at a recent CLC event. We learned about the valuable work of the LPC throughout New England, and about these distinctive birds that thrive in healthy water bodies like Lake Chocorua.



Loons (*Gavia immer*) are one of the most primitive birds on earth, with a 20 million year line of ancestry. Adapted for swimming and diving for fish, they are impressive indeed, weighing in at 13 lbs. with a 4.5 ft. wingspan and a lifespan of 20-25 years. Their relative heaviness reflects the fact that they are more closely related to penguins than ducks and other waterfowl, but their large feet are built for propelling them through the water, and are so far back on their body that they can't walk on land. Young loons are partially "precocial"; within 24 hours of hatching they leave the nest and can swim, but rely on their parents to feed and protect them early on. At the end of the summer and into the fall, loons head to the coast to spend the winter on salt water. Scientists aren't sure exactly where the young loons spend their juvenile years, or where they go to settle down at maturity. Still so much to learn!

Loons face many risks, from dietary toxins, entanglement in fishing line, and ingestion of lead sinkers, to nest disturbance, habitat loss, and climate change. Do your part to help loons by giving them the space they need to nest, fish, and care for their young. Watch with binoculars but kindly keep your distance!

Find more information about loons on LPC's website at <http://www.loon.org> and at The Cornell Lab of Ornithology at [https://www.allaboutbirds.org/guide/Common\\_Loon/](https://www.allaboutbirds.org/guide/Common_Loon/).

**Want to be a citizen scientist?** The Loon Preservation Committee is interested in your loon observations: <http://www.loon.org/volunteer-field.php>

## HAVE A WILDLIFE NOTE TO SHARE?

Email it to [laura\\_cannon@chocorualakeconservancy.org](mailto:laura_cannon@chocorualakeconservancy.org)

My family has enjoyed Chocorua and the basin for almost 100 years, even before my grandparents bought the Pratt Cottage on Washington Hill in 1923. Since that time, Chocorua has been the site of weddings, birthdays, burials, and countless reunions of a family which has grown exponentially from its original geographically dispersed military core. It has been and will continue to be "the tie that binds" us.



So perhaps it is no surprise that the Pratt family celebrates CLC's practice of ensuring that our property is preserved through regular stewardship review of our conservation easement. Thanks to the diligent and expert efforts of Lynne Flaccus, we have learned more about the property we are so privileged to own, in a place that we love. Through Lynne, the CLC has been a terrific source of information on the natural aspects of the property: plants, trees, wildlife, relevant geological features, remnants of old buildings, past use, etc. Moreover, a stewardship visit is a recurring reminder of what a beautiful place we are privileged to own, and represents a reaffirmation of the value and importance of our properties by those equally devoted to Chocorua.

Regular stewardship review is also especially important for a property such as ours, which is owned by a family that has become so large and dispersed over the years. It is our assurance that new generations understand the importance of preservation and, as necessary, maintenance and repairs. A visit also draws attention to changes that may bear on conservation and preservation, and provides assurance of sensitivity to these values in the future.

Many property owners in the basin and the surrounding protected areas may not know about the conservation easements or covenants on their properties, or perhaps have forgotten that they exist. For some of the reasons referred to above, the covenants and easements, with associated stewardship review, represent a valuable property asset. Most importantly if CLC conservation easements become a comprehensive reality for all Chocorua landowners—and we are assuredly moving in that direction—we can all rest assured that our special place will be preserved in perpetuity for future generations.

- BILL MAYER



# Project Update: NRCS (Natural Resources Conservation Service)

BY LYNNE FLACCUS

*Stewardship Director*

**A**s you know from the Fall newsletter, we continue to work through a variety of projects with NRCS funding. We hope you'll stay posted on our progress and join in the fun!

This spring Forest Land Improvement (FLI) continues work delayed by last year's wet fall, going back into the Clark Reserve to work on the wood roads used in last summer's timber harvest. Our NRCS funding provides for trail maintenance including water bars and seeding with a "conservation mix" that reduces erosion and provides food for wildlife.



A branch of sunlight-dappled moose maple frames the work of trout habitat planning in the Scott Reserve. / Lynne Flaccus

FLI will also conduct "scarification" on a portion of those areas that were cut last summer, to prepare the soil for white pine and oak seed germination after a good crop year. If you remember last fall, the pines and oaks (among many other trees!) were packed with cones and acorns that have since

dropped to the forest floor. An early spring scarification benefits those dormant seeds and we will hopefully get a good crop of new saplings! This project was funded for 2019, but we are taking advantage of the good cone crop and moving forward ahead of schedule.



The Clark Preserve will be reseeded this spring. / Lynne Flaccus

This spring and summer we have funding to improve brook trout habitat on the Scott Reserve north of the lake. Dick Fortin from Tin Mountain Conservation will be surveying trout in the brook, identifying the project area, and working with his crew to place trees in strategic spots to slow water and sedimentation. The trees act as mini dams, creating the deep pools and gravel deposits our native trout need for spawning and other habitats necessary to their survival. We're excited to take part in this statewide effort with funding from NRCS and may be looking for volunteers to help with the surveys pre- and post-work. If you'd like to help, let us know.

Lastly, in the early fall of 2018 we will plant fruiting shrubs on two CLC properties. The Charlotte C. Browne Memorial Woods and Moose Meadows Preserve are being managed for field and open habitats for wildlife, and the shrubs we choose will provide yearly supplies of fruit for a variety of species while creating a mosaic of vegetation types on the landscape.

NRCS funding pays for the shrubs and mulch, but we will need "all hands on deck" for putting them in the ground! Keep an eye on our website and Facebook page for more information about timing and sign-up through our online volunteer form at [www.chocorualakeconservancy.org/joinsupport/volunteer](http://www.chocorualakeconservancy.org/joinsupport/volunteer).

Happy spring, everyone!

*To learn more about NRCS and NH's NRCS Environmental Quality Incentives Program (EQIP) that provides cost share to landowners for land stewardship, go to: <http://bit.ly/2A2dVMs>*

Chocorua Lake Conservancy  
PO Box 105  
Chocorua, NH 03817

RETURN SERVICE REQUESTED

The Chocorua Lake Conservancy publishes and distributes an educational newsletter twice a year, in the Spring/Summer and Fall/Winter. Current and past issues are posted online at [chocorualakeconservancy.org/news/newsletter](http://chocorualakeconservancy.org/news/newsletter).

**Editor & Layout:** Laura Cannon

**Assistant Editors:** Juno Lamb, Theo Page, Ruth Weld

**Contributors:** Rick Allmendinger, Lynne Flaccus, Juno Lamb, Bill Mayer, Alex Moot, Greg Shute, Pete Wager, Ruth Weld



*The Chocorua Lake Conservancy is a volunteer-led land trust dedicated to its mission of protecting the natural beauty of the Chocorua Lake Basin and providing public access for present and future visitors.*

**Find us online:**

[chocorualake.org](http://chocorualake.org)

[facebook.com/chocorua.lake.conservancy](https://facebook.com/chocorua.lake.conservancy)

[instagram.com/chocorualakeconservancy](https://instagram.com/chocorualakeconservancy)

**Support us:**

[www.chocorualakeconservancy.org/donate/](http://www.chocorualakeconservancy.org/donate/)

[www.timelesschocorua.org](http://www.timelesschocorua.org)

## IN THIS ISSUE:

- Celebrating 50 Years of Conservation
- *Timeless Chocorua* Protects the Future
- A Summer of Celebration
- Stewardship Corner
- Wildlife Notes
- NRCS Project Update
- Annual Report



The iconic loon cuts a striking profile. Learn more on page 14. /Greg Shute