

# CHOCORUA LAKE

## 2021 SAMPLING HIGHLIGHTS

### Station – 1 South

Tamworth, NH



Refer to the 2021 Chocorua Lake Annual Report for additional information.

**Blue** = Excellent = Oligotrophic

**Yellow** = Fair = Mesotrophic

**Red** = Poor = Eutrophic

**Gray** = No Data

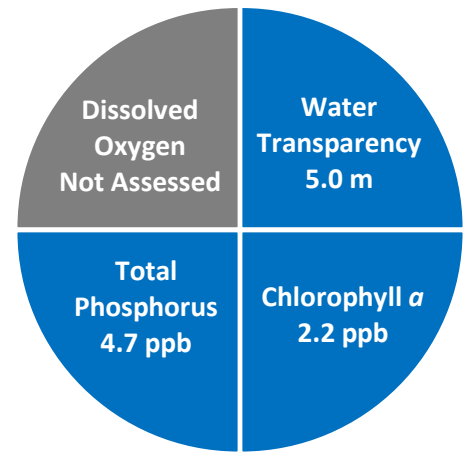


Figure 1. Chocorua Lake Water Quality (2021)

Table 1. 2021 Chocorua Lake Seasonal Averages and NH DES Aquatic Life Nutrient Criteria<sup>1</sup>

Parameter	Oligotrophic "Excellent"	Mesotrophic "Fair"	Eutrophic "Poor"	Chocorua Lake Average (range)	Chocorua Lake Classification
Water Clarity (meters)	> 4.0	2.5 – 4.0	< 2.5	5.0 meters (3.5 – 6.3)	Oligotrophic
Chlorophyll <i>a</i> <sup>1</sup> (ppb)	< 3.3	3.3 – 5.0	> 5.0	2.2 ppb (1.0 – 7.2)	Oligotrophic
Total Phosphorus <sup>1</sup> (ppb)	< 8.0	8.0 – 12.0	> 12.0	4.7 ppb (3.6 – 7.6)	Oligotrophic
Dissolved Oxygen (mg/L)	5.0 – 7.0	2.0 – 5.0	< 2.0	Not Assessed	Not Assessed

Table 2. 2021 Chocorua Lake Seasonal Average Accessory Water Quality Measurements

Parameter	Assessment Criteria					Chocorua Lake Average (range)	Chocorua Lake Classification
	< 10 uncolored	10 – 20 slightly colored	20 – 40 lightly tea colored	40 – 80 tea colored	> 80 highly colored		
Color (color units)	< 10 uncolored	10 – 20 slightly colored	20 – 40 lightly tea colored	40 – 80 tea colored	> 80 highly colored	26.3 color units (range: 14.6 – 37.6)	Lightly tea colored
Alkalinity (mg/L)	< 0.0 acidified	0.1 – 2.0 extremely vulnerable	2.1 – 10 moderately vulnerable	10.1 – 25.0 low vulnerability	> 25.0 not vulnerable	4.2 mg/L (range: 3.2 – 5.4)	Moderately vulnerable
pH (std units)	< 5.5 suboptimal for successful growth and reproduction		6.5 – 9.0 optimal range for fish growth and reproduction			6.9 standard units (range: 6.8 – 7.1)	Optimal range for fish growth and reproduction
Specific Conductivity (uS/cm)	< 50 uS/cm Characteristic of minimally impacted NH lakes		50-100 uS/cm Lakes with some human influence	> 100 uS/cm Characteristic of lakes experiencing human disturbances		41.6 uS/cm (range: 39.4 – 43.2)	Characteristic of minimally impacted NH lakes

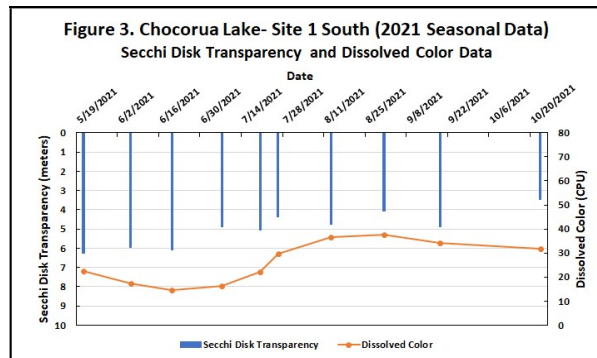
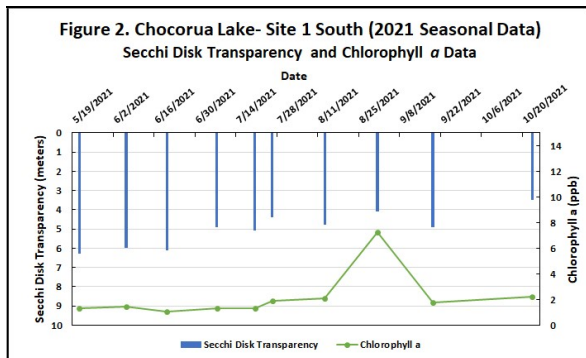


Figure 2 and 3. Seasonal Secchi disk transparency, chlorophyll *a* changes and dissolved color concentrations. Figures 2 and 3 illustrate the interplay among Secchi Disk transparency, chlorophyll *a* and dissolved color. Shallower water transparency measurements oftentimes correspond to increases in chlorophyll *a* and/or color concentrations.

## LONG TERM TRENDS

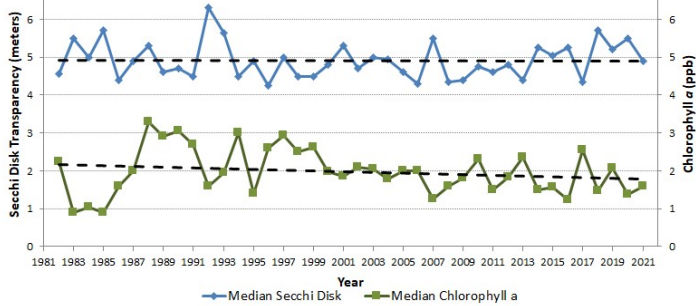
**WATER CLARITY:** Water clarity, measured as Secchi disk depth, displays a relatively stable trend between 1982 and 2021 (Figure 4). A closer examination of the water transparency data, collected before the implementation of erosion control measures (1982-1999) along the Route 16 travel corridor, display a trend of decreasing water clarity (Figures 6). On the other hand, the post-BMP (2000-2021) water transparency data display a trend of stable to slightly improving water transparency over the past twenty-two years (Figure 7).

**CHLOROPHYLL:** Chlorophyll *a*, a measure of microscopic plant life within the lake, has oscillated between 1982 and 2021 and has displayed a stable to slightly improving trend (Figure 4). A closer examination of the chlorophyll data, collected before and after the installation of erosion control measures along the Route 16 travel corridor, indicate the water quality improvements occurred over the past twenty-two years. The chlorophyll *a* concentrations increased by approximately 2.0 parts per billion (ppb) between 1982 and 1999 (Figure 6), while the chlorophyll *a* concentrations documented between 2000 and 2021 (Figure 7), following the installation of erosion control measures, have decreased (improved).

**TOTAL PHOSPHORUS:** Phosphorus is the nutrient most responsible for microscopic plant growth. The long-term total phosphorus data display a relatively stable trend between 1999 and 2021 (Figure 5) while the total phosphorus concentrations exhibit significant variability from year to year. Note: total phosphorus data were not collected consistently prior to the 1999 sampling season.

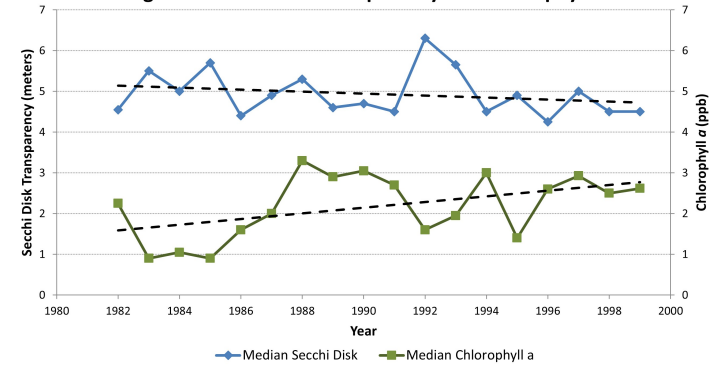
**COLOR:** Color is a result of naturally occurring “tea” color substances from the breakdown of soils and plant materials. Color has varied annually but displays a relatively stable long-term trend between 1986 and 2021 (Figure 5).

**Figure 4. Chocorua Lake- Site 1 South (1982-2021)  
Long-Term Secchi Disk Transparency and Chlorophyll *a* Data**



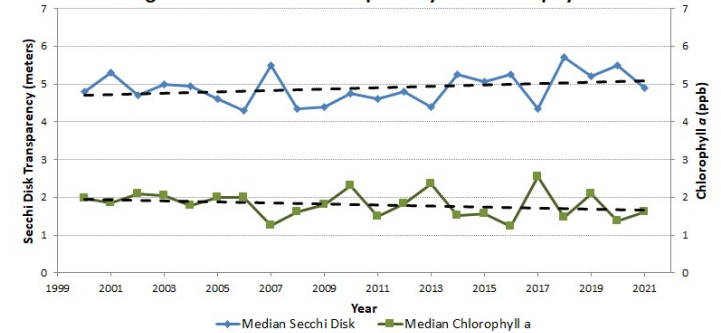
Figures 4 and 5. Changes in the Chocorua Lake water clarity (Secchi Disk depth), chlorophyll *a*, total phosphorus and dissolved color concentrations measured between 1982 and 2021. **These data illustrate the relationship among plant growth, water color and water clarity. Total phosphorus data are also displayed and are oftentimes correlated with the amount of plant growth.** Trendlines are displayed for each of the four water quality measurements.

**Figure 6. Chocorua Lake- Site 1 South (Pre-BMPs: 1982-1999)  
Long-Term Secchi Disk Transparency and Chlorophyll *a* Data**

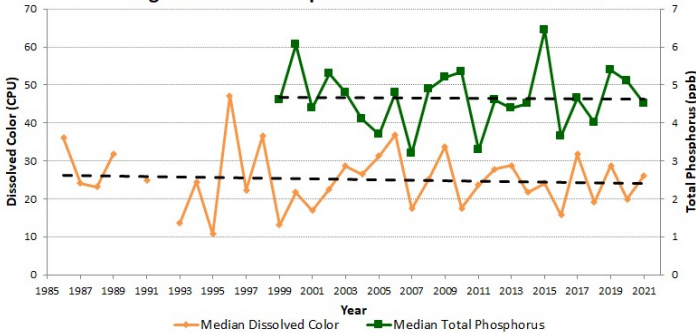


Figures 6 and 7. Changes in the Chocorua Lake water clarity (Secchi Disk depth) and chlorophyll *a* measured before (1982-1999) and after (2000-2021) the installation of erosion control measures, known as best management practices (BMPs), along the Route 16 travel corridor. Trendlines are displayed for both the water clarity and chlorophyll *a* measurements.

**Figure 7. Chocorua Lake- Site 1 South (Post-BMPs: 2000-2021)  
Long-Term Secchi Disk Transparency and Chlorophyll *a* Data**



**Figure 5. Chocorua Lake - Site 1 South (1986-2021)  
Long-Term Total Phosphorus and Dissolved Color Data**



## Recommendations

Implement Best Management Practices within the Chocorua Lake watershed to minimize the adverse impacts of polluted runoff and erosion into Chocorua Lake. Refer to “Landscaping at the Water’s Edge: An Ecological Approach” and “New Hampshire Homeowner’s Guide to Stormwater Management: Do-It-Yourself Stormwater Solutions for Your Home” for more information on how homeowners can reduce nutrient loading caused by overland run-off.

- [http://extension.unh.edu/resources/files/Resource004159\\_Rep5940.pdf](http://extension.unh.edu/resources/files/Resource004159_Rep5940.pdf)
- <https://www.des.nh.gov/sites/g/files/ehbemt341/files/documents/2020-01/homeowner-guide-stormwater.pdf>

# Figure 8. Chocorua Lake

Tamworth, NH

2021 Deep sampling site and seasonal average water clarity



0 0.1 0.2 0.3 0.4 Miles



Aerial Orthophoto Source: NH GRANIT  
Site location GPS coordinates collected by the UNH Center for Freshwater Biology



Extension

